

# The Economic Evaluation of System Security Criterion Selection in the Market Environment

Teoman Güler, *Member, IEEE*, and George Gross, *Fellow, IEEE*

**Abstract—** The maintenance of secure system operations is a highly challenging task that becomes even more complex as electricity markets gain prominence. We use insights into the tight coupling between market and system operations under restructuring to characterize analytically the interrelationships between the secure power system operations and the performance of the electricity markets. Such a characterization allows the development of an integrated analytic approach to quantify the economics of secure power system operations. The new approach permits the quantification of the market performance as a function of security criterion selection and provides, for the first time, the means to give an economic justification for a modification in the security criterion. Furthermore, the approach is useful in the cost/benefit assessment of network improvements aimed at mitigating the market performance impacts of a set of contingencies and their associated security control actions.

We illustrate the application of the proposed approaches on the large-scale ISO New England system in a number of studies. The results provide useful insights into the multi-faceted nature of issues that arise in today's tightly coupled market and system operations. In fact, the studies on the economics of system security provide important insights into the role of price-responsive demand and that of specific selected security control actions measured by the economic efficiency of the electricity markets. A key finding is that this efficiency need not decrease when a power system is operated under a stricter criterion, as long as there is effective price-responsive demand and appropriate utilization of the corrective control capabilities of the resources.

## I. INTRODUCTION

In the restructured environment, the improvement of the economic efficiency of electricity markets has been the focus of recent efforts [1], [2]. Central to these efforts is the better understanding of the nature of the tight coupling between market and system operations. The focus of this work is the dependence of market performance on system security. In this paper, we propose an approach to quantify the market performance as a function of a specified security criterion. We illustrate the application of the proposed approach on a large-scale system.

System security is defined as the ability of the

interconnected system to provide electricity with the appropriate quality under normal and contingency conditions [3]. The security criterion, with which the power system operations must comply, consists of the set of postulated contingencies and the associated preventive and/or corrective control actions [4]. For a given operating state, security assessment entails the verification that no violation occurs for any of the postulated contingencies taking fully into account the deployment of the associated security control actions. As these actions affect the market outcomes, a key step in the efforts to improve market performance is the assessment of these impacts of complying with the security criterion in monetary terms.

The economic efficiency of electricity markets is analyzed in various contexts by both empirical and analytical means. The empirical studies investigate the adverse impacts of market participants' behaviors on the performance of electricity markets [5]-[8]. The analytical studies, on the other hand, focus on the impacts of constrained system operations on markets to determine the unavoidable losses in the economic efficiency of electricity markets [9], [10]. The interactions between the system security criterion and the associated economics are investigated in terms of the marginal costing – used to determine the security prices – and the evaluation of expected system security costs. The security prices, determined in this way, explicitly incorporate the willingness of the market participants to provide security control capability into the market clearing process [11]-[13]. The expected system security costs are evaluated taking explicitly into account the random nature of the outages and the costs of the required security control actions to deal with them [14], [15]. A key result of [15] is that the security criterion may be set by the cost/benefit analysis taking into account the expected costs of operating the system and the expected outage costs. Such an approach may be viewed as the application of the notion of “value of reliability” introduced in [16] which was used for operational planning purposes [17]. There is a clear need, in the restructured environment, to quantify the market performance as a function of system security in a way that appropriately reflects the *RTO* operations. This quantification further requires the consideration of different market and system conditions that may exist within a period in order to capture the range of impacts under such conditions.

In this work, we explicitly consider the market and the system operations from the point of view of the *RTOs*. We consider the day-ahead market, or *DAM*, structure. In the proposed approach, we quantify the market performance for a

T.Güler is with PSEG Energy Resources and Trade, Newark, NJ 07302 (teoman.guler@pseg.com) and G.Gross is with the Department of Electrical and Computer Engineering, University of Illinois at Urbana -Champaign, Urbana, IL 61801 USA (gross@illinois.edu).

system snapshot under a specified security criterion. This quantification, based on the emulation of the way the *RTO* currently operates the markets and the system for a specified point of time, serves as the basic building block of the methodology. The evaluation of the impacts over a longer period requires an extension of the snapshot analysis. In this way, we are able to capture the impacts of changes in the topology of the system, the network parameters, the set of generating resources and the market participants' behaviors over time. We repeat this procedure to study the corresponding impacts of a different criterion, so that, we can carry out comparative market performance assessments.

The proposed approach has a wide range of applications such as the justification by the *RTO* of the decision to modify the security criterion to be used and the cost/benefit analysis of network improvements to mitigate the market performance impacts of a set of specified contingencies. We illustrate the application of the proposed approach on the ISO-NE *DAM* to quantify the performance impacts of operating the system under different system security criteria for representative days in 2005 period. These studies capture, in a meaningful way, the impacts of the changes with respect to the current security criterion. An important characteristic of the study period is the role of price-responsive demand in ensuring compliance with the system security criterion. We evaluate explicitly the impacts of such demand has on market outcomes. An important finding of this study is that the economic efficiency of electricity markets need not decrease when the power systems are operated under a stricter criterion when price-responsive demand is present and appropriate control actions are effectively deployed.

This paper contains five additional sections. The nature of the problem and the market performance quantification for a system snapshot are described in section II. We devote section III to the discussion of the proposed approach. In section IV, we apply the proposed approach to the ISO-NE *DAM* and present the study results in detail. Section V summarizes the paper and discusses future work..

## II. MARKET ASSESSMENT FOR A SYSTEM SNAPSHOT

We introduce specific assumptions on unit commitment decisions, ancillary services and the market participants' behaviors so as to allow the side-by-side comparison of different security criteria impacts for a given system. We assume that the unit commitment decisions fully reflect the requirements of the security criterion under consideration. In particular, this assumption ensures the feasibility of meeting the system fixed demands under such a criterion. As the focus of this investigation is limited to energy only markets, we assume that the ancillary services provision and acquisition requirements under the *RTO* framework do not impose any additional constraints on the system. For the purposes of this study, we furthermore assume that the bidding behavior of each market participant is independent of the security criterion in force. Since we replicate the *RTO* actions, we ensure compliance with the security criterion in force, but implicitly ignore the probability of any contingency in the studies.

The modeling of the large-scale interconnected system operated by the *RTO* requires the explicit representation of the areas that make up the system as well the tie lines that interconnect them in market and system operations. We consider a power system network consisting of  $K$  interconnected areas denoted by the set  $\mathcal{A} \triangleq \{\mathcal{A}^k : k=1, \dots, K\}$  with each area  $\mathcal{A}^k$  having a node set  $\mathcal{N}^k$  with  $N^k$  buses. Each area  $\mathcal{A}^k \in \mathcal{A}$  is connected to one or more other areas via tie lines. We associate a security criterion  $\mathcal{C}$  with a specific contingency list and a specified control action – preventive or corrective – for every contingency on that list. A preventive control action associated with a postulated contingency entails the modification of the pre-contingency – base case – state, to eliminate any potential violation, were that contingency to occur. On the other hand, an associated corrective control action may involve the modification of both the pre- and the post- contingency states. The modification of the pre-contingency state involves steering the operating point into a state in which the *RTO* is able to modify the resources' dispatch, including those of both load and generation, to alter the post-contingency state only after the contingency actually occurs. As such, there may be no change in resource utilization if the contingency fails to happen. For some contingencies, such as a generator outage or a sudden load change, the *RTO* may take only corrective control actions.

The *RTO* decision making problem for a given snapshot of the system under a specified security criterion takes explicitly into account the multi-area structure and the constraints imposed by the tie line limits. We next express the statement of the problem solved by the *RTO* for a given snapshot of the interconnected system in mathematical terms.

While the interconnected system has a single market operated by the *RTO*, the presence of network and physical constraints necessitate that we consider the market players in each area separately. We assume without loss of generality, that at each bus  $i \in \mathcal{N}^k$  there is a single seller and a single buyer. We denote by the sets  $\mathcal{S}^k = \{s_1^k, \dots, s_{N^k}^k\}$  and  $\mathcal{B}^k = \{b_1^k, \dots, b_{N^k}^k\}$ , the collection of sellers and that of buyers of the area  $\mathcal{A}^k \in \mathcal{A}$ , respectively. Each seller (buyer) submits price and quantity offer (bid) function indicating the willingness to sell (buy) the amount of energy to (from) the *RTO*. Bilateral transactions coexist with the *RTO* market operations. We represent a bilateral transaction  $\omega_w$ , whose from node is  $m_w \in \mathcal{N}^k$  of  $\mathcal{A}^k$ , to node is  $n_w \in \mathcal{N}^r$  of  $\mathcal{A}^r$ , and desired transaction amount is  $\bar{t}_w$ , by the triplet  $\omega_w \triangleq \{m_w, n_w, \bar{t}_w\}$ . Here  $k$  and  $r$  are indices that may represent different areas. The set of bilateral transactions is  $\mathcal{W} = \{\omega_1, \dots, \omega_w\}$ . Each transaction submits a willingness to pay function, which states a willingness to pay maximum transmission usage fees for receiving the requested transmission services as a function of the transaction amount delivered [18]. The *RTO* weighs the willingness to pay of the bilateral transactions with that of the individual market participants to determine the amount of transmission service provision to each player. For this purpose for a given snapshot of the system, the *RTO* solves a security

constrained OPF, or SCOPF, problem with the objective to maximize the social welfare under the security criterion  $\mathcal{C}$  whose contingency index set is denoted by  $\mathcal{J}_c$ . We state the SCOPF problem as

$$\max \mathcal{S} \triangleq \sum_{k=1}^K \left( \sum_{j=1}^{N^k} \beta_{b_j^k} (p_{b_j^k}^{(0)}) - \sum_{i=1}^{N^k} \beta_{s_i^k} (p_{s_i^k}^{(0)}) \right) + \sum_{w=1}^W \alpha_w (t_w^{(0)}) \quad (1)$$

subject to

$$\underline{\mathbf{g}}^{(0)}(\underline{\mathbf{p}}_s^{(0)}, \underline{\mathbf{p}}_b^{(0)}, \underline{\mathbf{t}}^{(0)}, \underline{\boldsymbol{\chi}}^{(0)}, \underline{\boldsymbol{\gamma}}^{(0)}) = \underline{\mathbf{0}} \quad \leftrightarrow \quad \underline{\boldsymbol{\lambda}}^{(0)} \quad (2)$$

$$\underline{\mathbf{h}}^{(0)}(\underline{\mathbf{p}}_s^{(0)}, \underline{\mathbf{p}}_b^{(0)}, \underline{\mathbf{t}}^{(0)}, \underline{\boldsymbol{\chi}}^{(0)}, \underline{\boldsymbol{\gamma}}^{(0)}) \leq \underline{\mathbf{0}} \quad \leftrightarrow \quad \underline{\boldsymbol{\mu}}_h^{(0)} \quad (3)$$

and for every  $j \in \mathcal{J}_c$

$$\underline{\mathbf{g}}^{(j)}(\underline{\mathbf{p}}_s^{(j)}, \underline{\mathbf{p}}_b^{(j)}, \underline{\mathbf{t}}^{(j)}, \underline{\boldsymbol{\chi}}^{(j)}, \underline{\boldsymbol{\gamma}}^{(j)}) = \underline{\mathbf{0}} \quad \leftrightarrow \quad \underline{\boldsymbol{\lambda}}^{(j)} \quad (4)$$

$$\underline{\mathbf{h}}^{(j)}(\underline{\mathbf{p}}_s^{(j)}, \underline{\mathbf{p}}_b^{(j)}, \underline{\mathbf{t}}^{(j)}, \underline{\boldsymbol{\chi}}^{(j)}, \underline{\boldsymbol{\gamma}}^{(j)}) \leq \underline{\mathbf{0}} \quad \leftrightarrow \quad \underline{\boldsymbol{\mu}}_h^{(j)} \quad (5)$$

$$|\underline{\mathbf{p}}_s^{(j)} - \underline{\mathbf{p}}_s^{(0)}| \leq \underline{\Delta \mathbf{p}}_s^{(j)} \quad \leftrightarrow \quad \underline{\boldsymbol{\mu}}_s^{(j)} \quad (6)$$

$$|\underline{\mathbf{p}}_b^{(j)} - \underline{\mathbf{p}}_b^{(0)}| \leq \underline{\Delta \mathbf{p}}_b^{(j)} \quad \leftrightarrow \quad \underline{\boldsymbol{\mu}}_b^{(j)} \quad (7)$$

$$|\underline{\mathbf{t}}^{(j)} - \underline{\mathbf{t}}^{(0)}| \leq \underline{\Delta \mathbf{t}}^{(j)} \quad \leftrightarrow \quad \underline{\boldsymbol{\mu}}_t^{(j)} \quad (8)$$

Here, we use the superscript  $(j)$  to denote the contingency cases with the base case denoted by  $(0)$ . The vector associated with the right-hand side of a constraint is the dual variable of that constraint. The relations in (2) and (3) represent the operational constraints for the base case, while those in (4)–(8) represent the operational constraints for the contingency cases. The  $|\mathcal{J}_c|+1$  equality constraints in (2) and (4) state the nodal power balance equations for the base case and for each postulated contingency case, respectively. The base case (3) and contingency case (5) inequality constraints state the system components' operational limits, as well as, the so-called generic limitations representing the physical, engineering and policy considerations. The range of the decision variables of the security control action for each contingency  $j \in \mathcal{J}_c$  is given in (6)–(8) together with the limiting values of these ranges.

The market performance under the specified security criterion  $\mathcal{C}$  for the snapshot system may be quantified from the market outcomes given by the solution of (1)–(8). We define metrics to measure market outcomes on a system and an area basis, as well as, the impacts on individual player outcomes. We use the optimal value of the social welfare  $\mathcal{S}|_{\mathcal{C}}$  under  $\mathcal{C}$  as a measure for the economic efficiency of the market as a whole. In addition, for area  $\mathcal{A}^k$ , we evaluate

$$\mathcal{S}^k|_{\mathcal{C}} \triangleq \sum_{i=1}^{N^k} \left[ \beta_{b_i^k} (p_{b_i^k}^{*(0)}) - \beta_{s_i^k} (p_{s_i^k}^{*(0)}) \right] \Big|_{\mathcal{C}} \quad (9)$$

to determine the area  $\mathcal{A}^k$  contribution to the social welfare. The *producer (consumer) surplus* measures the performance or the gain of each seller (buyer) for participating in the electricity market. The seller  $s_i^k$  producer surplus is

$$\sigma_{s_i^k}|_{\mathcal{C}} \triangleq \left[ \lambda_i^{*k(0)} p_{s_i^k}^{*(0)} - \beta_{s_i^k} (p_{s_i^k}^{*(0)}) \right] \Big|_{\mathcal{C}} \quad (10)$$

and the buyer  $b_i^k$  consumer surplus is

$$\sigma_{b_i^k}|_{\mathcal{C}} \triangleq \left[ \beta_{b_i^k} (p_{b_i^k}^{*(0)}) - \lambda_i^{*k(0)} p_{b_i^k}^{*(0)} \right] \Big|_{\mathcal{C}}. \quad (11)$$

Here,  $\lambda_i^{*k(0)}$  is the locational marginal price (LMP) at node  $i$  of the area  $k$  corresponding to the base case conditions. We use the total dispatched load to evaluate the total cleared demand quantity under criterion  $\mathcal{C}$

$$P|_{\mathcal{C}} \triangleq \sum_{k=1}^K \sum_{i=1}^{N^k} \left[ p_{b_i^k}^{*(0)} + \sum_{w=1, i=n_w \in \mathcal{A}^k}^W t_w^{*(0)} \right] \Big|_{\mathcal{C}}. \quad (12)$$

We compute the area-wide net injection to indicate amount of net power imported into to an area  $\mathcal{A}^k$  with

$$P^k|_{\mathcal{C}} \triangleq \sum_{i=1}^{N^k} \left[ p_{s_i^k}^{*(0)} - p_{b_i^k}^{*(0)} + \sum_{w=1, i=m_w \in \mathcal{A}^k}^W t_w^{*(0)} - \sum_{w=1, i=n_w \in \mathcal{A}^k}^W t_w^{*(0)} \right] \Big|_{\mathcal{C}} \quad (13)$$

The value of the metrics mentioned above is useful for the performance quantification of market for a given snapshot and constitutes the basic building of the approach. We conceptually represent this snapshot assessment framework in Fig.1.

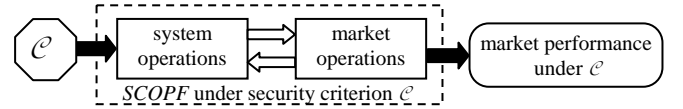


Fig. 1 The snapshot assessment framework

When a different security criterion  $\mathcal{C}'$  is considered, the RTO must solve a modified SCOPF in which the constraints in (4)–(8) reflect the changes in the contingency set  $\mathcal{J}_{c'}$  and in the security control actions associated with each contingency. To measure the impacts on market performance due to the change in the security criterion from  $\mathcal{C}$  to  $\mathcal{C}'$ , we introduce for each metric the relative performance metric which measures the difference of the values under  $\mathcal{C}'$  and  $\mathcal{C}$ , respectively. For example, the relative social welfare metric is

$$\Delta \mathcal{S}_{\mathcal{C}'} = \mathcal{S}|_{\mathcal{C}'} - \mathcal{S}|_{\mathcal{C}} \quad (14)$$

and quantifies the change in economic efficiency of the electricity market for the change in the security criterion from  $\mathcal{C}$  to  $\mathcal{C}'$ . We use analogous expressions for the metrics in (9)–(13) to define the corresponding relative performance metrics for such a change. These relative measures have practical and useful interpretations. For example, the relative metric of the contribution to the social welfare of area  $\mathcal{A}^k$  indicates how the market participants located in  $\mathcal{A}^k$  are impacted by the change in the security criterion from  $\mathcal{C}$  to  $\mathcal{C}'$ . We interpret in a similar way the changes in the producer/consumer surpluses, the total dispatched load and the area-wide net injection.

The feasibility set under the security criterion  $\mathcal{C}$  is determined by the collection of decision variables that satisfy the constraints (2)–(8). We call the security criterion  $\mathcal{C}'$  tighter than  $\mathcal{C}$  if the feasibility set under  $\mathcal{C}'$  is a strict subset of the feasibility set corresponding to the criterion  $\mathcal{C}$ . It follows that the optimal social welfare under  $\mathcal{C}'$  is bounded

from above by that under  $\mathcal{C}$ . The value of the relative social welfare metric is, therefore, non-positive and depends on, among other factors, the willingness to pay of the buyers.

We distinguish between fixed demand buyers and those with price-responsive demand. The fixed demand bid is a special case of the price sensitive bid in which a specified quantity is submitted with no price information. In order to include these buyers' benefits in the SCOPF problem formulation (1)–(8), we use a constant per *MWh* benefit value,  $\tau$ , for the fixed demand. A change in the security criterion does not impact the such buyers benefits.

Under a given security criterion, the snapshots corresponding to different system and market conditions may result in marked changes in the market performance outcomes. Such differences are caused by many factors including changes in the loads, the set of available units, and the offers/bids submitted. In turn, these changes may also result in different values of the relative performance metrics. Consequently, these assessments must be carried out over a period to correctly capture the impacts of the different conditions that exist during that period. In the next section, we extend the snapshot approach to carry out such assessments.

### III. PROPOSED APPROACH

In this section, we describe the way we extend the comparative market performance assessment over a study period. Since the focus of this work is on the *DAMs*, we use an hourly resolution as the shortest time unit and represent the system for the hour  $h$  by its system snapshot.

Conceptually, we assess the market performance assessment at each hour of a given study period. In effect, we apply the framework shown in Fig. 1 to each hour of the period for the specified security criterion. To assess the market performance impacts due to a change in the security criterion, the entire multiple snapshot procedure must be repeated for the security criterion under consideration. The hourly values of the relative performance metrics are summed to obtain the daily values which, in turn, are used to compute the relative performance metrics for the entire study period. However, for a large-scale system, such an approach may impose a large burden on computing resources. One way to deal with this complication is to perform the assessments for a smaller representative sample of the hours. For this purpose, we use the scheme developed at [22] in order to systematically select this smaller subset of representative hours,  $\mathcal{D}_r$ .

We apply the structure shown in Fig. 1 to each hour of the days in  $\mathcal{D}_r$  for each specified criteria. We quantify the hourly relative performance metrics and aggregate them for each day. We use the number of days each day in  $\mathcal{D}_r^i$  represents and aggregate the daily figures to obtain monthly impacts. The daily figures also serve to evaluate key statistics for each month such as mean, variance and range. The study period impacts then are aggregated form the monthly ones. Thus, we are able to quantify the system and area-wide *MW* as well as dollar impacts on a daily, monthly and period basis.

The proposed approach has a wide range of applications such as the justification by the *RTO* of the decision to modify

the security criterion to be used and the cost/benefit analysis of network improvements to mitigate the market performance impacts of a set of specified contingencies. Other applications include the formulation of the control actions for specific contingencies, and the assessment of specific behavioral changes of market participants under various security criteria. We next illustrate an application of the proposed approach to the ISO-NE *DAM* system.

### IV. APPLICATION STUDY

We illustrate the application of the proposed approach on the ISO-NE *DAM*. The objective of this study is to analyze whether the economic efficiency of the ISO-NE *DAM* is adversely impacted by the system operations complying with the security criterion in force. For this purpose, we quantify the market performance as a function of three security criteria and perform comparative assessments. We measure the changes with respect to the outcomes under the current ISO-NE security criterion.

We use the system and market data from the year 2005 and utilize the actual market clearing software used for the ISO-NE *DAM*. We start out with a brief description of the multi-area structure of the ISO-NE system. Then, we discuss the selection of the representative days for the study period. We describe the ISO-NE current security criterion, which we use as the reference criterion, and the two security criteria considered. We then summarize and interpret the study results.

Each area of the ISO-NE system is characterized as either import or export. The import areas are [19]

- $\mathcal{A}^1$  : Boston/NE Massachusetts
- $\mathcal{A}^2$  : Connecticut
- $\mathcal{A}^3$  : SW Connecticut
- $\mathcal{A}^4$  : Norwalk/Stamford

We treat rest of the system as a single export area and denote it by  $\mathcal{A}^5$ . Fig. 2 illustrates conceptually the multi-area structure of the ISO-NE.

The study is performed for the second half of the year 2005. This study period was chosen to allow the use of market and system data that reflects the most up-to-date ISO-NE procedures and rules. The analysis of the load in the selected period shows that the demand levels in the summer months, July and August, are significantly higher than those in the *non-summer* months – the months from September to December. Furthermore, the range of daily peak demands in the summer months is considerably larger than that in the non-summer months. Due to the maintenance scheduling, the sets of available resources in summer months are different than those in the other months. In addition, the ratings of the system components differ in each summer month from those in the other months. The period under study is further characterized by the existence of two distinct regimes  $\mathcal{R}_1$  and  $\mathcal{R}_2$  – pre- and post- October 9, 2005, respectively. The ratio of the hourly price sensitive bid amounts to the total hourly demand changes markedly from a small value under the regime  $\mathcal{R}_1$ , to a sizable fraction under the regime  $\mathcal{R}_2$ . The hourly loads in these two regimes are further distinguished in terms of their peak, base and average values. We present the load characteristics of the regimes  $\mathcal{R}_1$  and  $\mathcal{R}_2$  in Table 1. The minimum, maximum and the average hourly load values are

disaggregated into the fixed and price responsive components in Table 1. The significant increase in the fraction of price-sensitive demand is due to the bidding behavior change of the large buying entity whose demand corresponds to approximately 25 % of the total system demand. This buyer submits, on the average, only 10% of his demand as price sensitive under the regime  $\mathcal{R}_1$ . However, the buyer has no fixed demand under regime  $\mathcal{R}_2$  as all of the buyer's bids become price sensitive, as shown in Fig. 3. Due to the size of the buyer's demand, the marked change in his bidding behavior results in a significant portion of the total system demand that is price responsive under the regime  $\mathcal{R}_2$ .

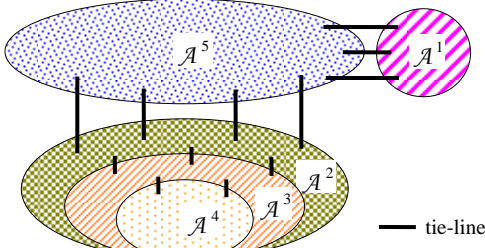


Fig. 2 Multi-area structure of the ISO-NE system

We select the representative days from each month using the scheme of Appendix B. We construct the *LDC* approximation for each summer and non-summer month by 14 and 10 representative days, respectively. Since these approximations provide acceptably small errors, we determine the elements of each  $\mathcal{D}_r^i$  and construct  $\mathcal{D}_r$ .

The ISO-NE operates the system under the security criterion  $\mathcal{C}$  whose list of contingencies is

$$\mathcal{F}_{\mathcal{C}} = \mathcal{F}_{n-1} \cup \left( \bigcup_{k=1}^4 \mathcal{X}^k \right). \quad (15)$$

Here,  $\mathcal{F}_{n-1}$  is the set of single element contingencies considered by the ISO-NE and  $\mathcal{X}^k$  is the set of double tie line contingencies specified for each import area  $\mathcal{A}^k \in \mathcal{A}$ ,  $k=1, \dots, 4$ . Each selected tie line pair interconnects the import area  $\mathcal{A}^k$  to any other area of the system. The set of control actions for the security criterion consists of preventive control actions which are associated with the elements of  $\mathcal{F}_{n-1}$ , and corrective control actions which are associated with the double element tie line contingencies of  $\bigcup_{k=1}^4 \mathcal{X}^k$  [19]. We select the criterion  $\mathcal{C}$  as the reference criterion and consider two specific criteria  $\mathcal{C}^a$ , a modified  $(n-1)$  security, and  $\mathcal{C}^b$ , a modified  $(n-2)$  security. For the criterion  $\mathcal{C}^a$ , the contingency list  $\mathcal{F}_{\mathcal{C}^a} = \mathcal{F}_{n-1}$ , and preventive control action is the deployed for each contingency in  $\mathcal{F}_{\mathcal{C}^a}$ . For the criterion  $\mathcal{C}^b$ , the contingency list  $\mathcal{F}_{\mathcal{C}^b} = \mathcal{F}_{\mathcal{C}}$ , but we replace the corrective control actions by the preventive control actions for the contingencies in  $\bigcup_{k=1}^4 \mathcal{X}^k$ . We next discuss the market performance impacts of the change of security criterion  $\mathcal{C}$  to each of the criteria considered and distinguish those impacts under the two regimes  $\mathcal{R}_1$  and  $\mathcal{R}_2$ .

TABLE 1. REGIMES  $\mathcal{R}_1$  AND  $\mathcal{R}_2$  LOAD CHARACTERISTICS

regime	$\mathcal{R}_1$		$\mathcal{R}_2$	
load type	fixed	price sensitive	fixed	price sensitive

minimum demand	6,232	2,944	5,394	5,139
maximum demand	21,292	4,845	12,109	9,573
average	13,075	4,294	8,756	6,964

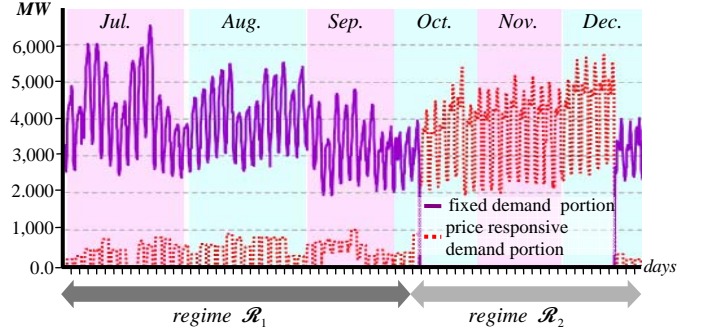


Fig. 3 The bidding behavior change of the larger buying entity

We first focus on the *MW* impacts. For the reference criterion  $\mathcal{C}$ , we obtain the range and the average values of the total hourly dispatched load  $P_{\mathcal{C}}$  under the regimes  $\mathcal{R}_1$  and  $\mathcal{R}_2$ . We compute the changes from the  $P_{\mathcal{C}}$  values under the two security criteria and present the results in Table 2. We observe that the price-responsive demand plays an important role in the *DAM*. For each security criterion, the changes under the regime  $\mathcal{R}_2$  are considerably lower than those under the regime  $\mathcal{R}_1$ . In fact, the changes are more pronounced for the change of the security criterion from  $\mathcal{C}$  to  $\mathcal{C}^b$  than from  $\mathcal{C}$  to  $\mathcal{C}^a$ . We hypothesize that the factors that contribute to these distinct outcomes are due to the structure of the system, the effectiveness of the security control actions and the nature of the constraints imposed on the system operations.

TABLE 2. TOTAL HOURLY DISPATCHED LOADS AND RANGE OF IMPACTS

metric	regime	range (MW)	average (MW)
$P_{\mathcal{C}}$	$\mathcal{R}_1$	( 9,177 , 25,638 )	16,967
	$\mathcal{R}_2$	( 8,733 , 23,281 )	15,421
$\Delta P_{\mathcal{C}^a}$	$\mathcal{R}_1$	( 0 , 452 )	141
	$\mathcal{R}_2$	( 0 , 273 )	42
$\Delta P_{\mathcal{C}^b}$	$\mathcal{R}_1$	( -818 , 0 )	-184
	$\mathcal{R}_2$	( -557 , 0 )	-128

The change from the current security criterion to either of the two criteria studied impacts the value of the system transfer capability. The change in the value of the system transfer capability, in turn, affects the ability of the import areas to bring in energy from the export area. In fact, the analysis of the ISO-NE system during this 2005 study period indicates that the replacement of the security criterion  $\mathcal{C}$  by the criterion  $\mathcal{C}^a$  results in the increased import capabilities of the import areas for each hour. But, the increased capability may not be utilized in every hour. For example, the imports by the stand-alone area  $\mathcal{A}^1$  buyers increase their imports from the export area, thereby decreasing their dependence on the less economic  $\mathcal{A}^1$  resources. On the other hand, the imports of the nested area  $\mathcal{A}^2$ , due to the physical constraints of the  $\mathcal{A}^2$  network, may not utilize such increased capability in every hour. We measure the changes in the utilization of the increased import capabilities using the relative area-wide net



injection metric for the areas  $\mathcal{A}^1$ ,  $\mathcal{A}^2$  and  $\mathcal{A}^5$ . We illustrate the results for the import areas  $\mathcal{A}^1$  and  $\mathcal{A}^2$ , and the export area  $\mathcal{A}^5$  for a week in August 2005 in Fig. 4. These plots are typical for the study period, particularly in terms of the more pronounced impacts in the daily peak hours than those in the off-peak hours.

Due to the fact that the system operations under the criterion  $\mathcal{C}^b$  are more constraining than those under the criterion  $\mathcal{C}$ , the security change from  $\mathcal{C}$  to  $\mathcal{C}^b$  results in the decreased import capabilities of the import areas for every hour of the study period. In fact, the impacts on the imports of the stand alone area  $\mathcal{A}^1$  are exactly in the opposite direction to those under the criterion change from  $\mathcal{C}$  to  $\mathcal{C}^a$ . On the other hand, the imports of the nested area  $\mathcal{A}^2$  exhibit similar results to those under the criterion change from  $\mathcal{C}$  to  $\mathcal{C}^a$ . We plot these outcomes for the same August week in Fig. 5. We note that the impacts are pronounced in both peak and off-peak hours.

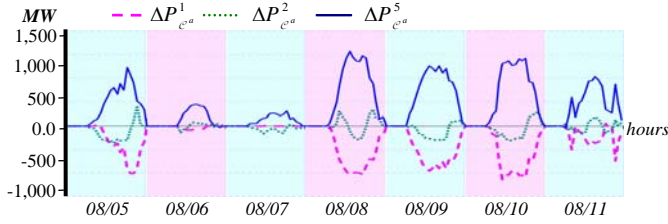


Fig. 4 Area-wide net injection impacts under  $\mathcal{C}^a$

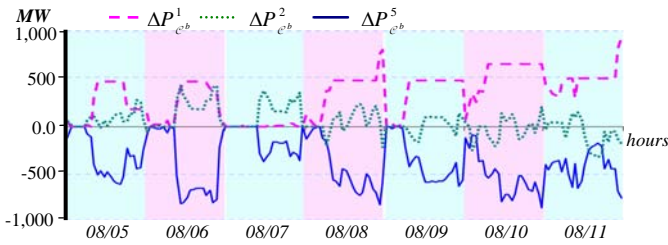


Fig. 5 Area-wide net injection impacts under  $\mathcal{C}^b$

We next examine the monetary impacts of the changes in the security criterion as measured by the relative social welfare metric. We use the daily social welfare as the basic metric in this investigation. We first normalize the daily social welfare values using the average value of the daily social welfare under the reference criterion  $\mathcal{C}$  as a base value. We use the normalized values to compare the impacts with respect to the values under the reference criterion, as well as, across study periods of different durations. In this way, the comparisons are both consistent and meaningful. We can interpret the results to understand the nature of the impacts and how they relate to the values attained under the reference criterion  $\mathcal{C}$ . For concreteness, we use a value of  $\tau=1,000$   $\$/MWh/h$  for evaluating the benefits of the buyers submitting fixed demand. We first consider the economic repercussions of the increased import capabilities arising from the relaxation of the security criterion from  $\mathcal{C}$  to  $\mathcal{C}^a$ . Throughout the study period, the increased import capabilities are utilized leading to higher market efficiencies. We may view these improvements as a measure of the “costs” of not violating the constraints due

to the double element contingencies in the reference criterion. On the other hand, the decreased import capabilities arising from changing the criterion from  $\mathcal{C}$  to  $\mathcal{C}^b$  may lower the social welfare. Indeed, such reductions are present throughout the study period. We may interpret these reductions to be a measure of the “costs” of replacing corrective for preventive control actions. The plot of the normalized daily social welfare values under the reference criterion  $\mathcal{C}$  is given in Fig. 6 for the set of days  $\mathcal{D}_r$ . The plots of the changes in social welfare arising from a change of the security criterion are shown in Fig. 7. In this figure, we also provide the normalized impacts considering a different value of  $\tau'=10,000$   $\$/MWh/h$ . Note that, the different values of  $\tau$  and  $\tau'$  impact the normalized values but do not affect the nature of the impacts. We provide some of the statistics related to the maximum, the mean and the standard deviation of the values of relative social welfare metrics under the regimes  $\mathcal{R}_1$  and  $\mathcal{R}_2$  for each security criterion change in Table 3.

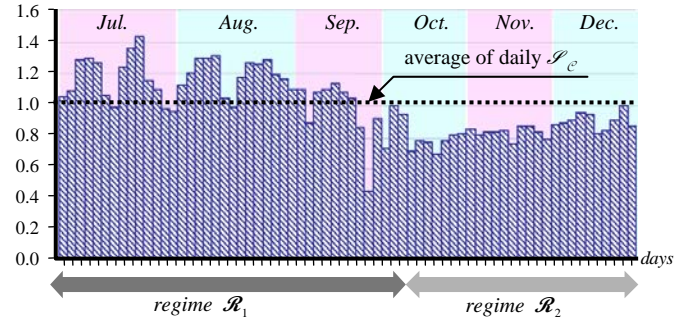


Fig. 6 Normalized daily social welfare under criterion  $\mathcal{C}$

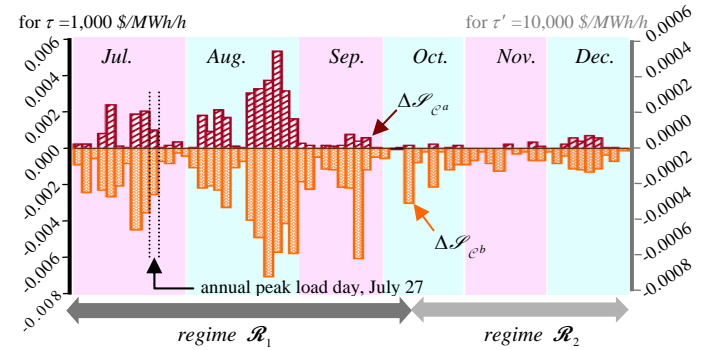


Fig. 7 The normalized daily impacts on social welfare

TABLE 3. STATISTICAL ANALYSIS OF THE RELATIVE SOCIAL WELFARE METRIC VALUES UNDER THE REGIMES  $\mathcal{R}_1$  AND  $\mathcal{R}_2$  (BASIS IS  $\mathcal{C}$ )

criteria	regime	maximum	mean	standard deviation
$\mathcal{C}^a$	$\mathcal{R}_1$	0.00541	0.00098	0.00130
	$\mathcal{R}_2$	0.00070	0.00012	0.00023
$\mathcal{C}^b$	$\mathcal{R}_1$	-0.00715	-0.00224	0.00182
	$\mathcal{R}_2$	-0.00215	-0.00068	0.00051

We obtain additional insights into the impacts of the security criterion change on the market participants in each area by studying the disaggregation of the metrics  $\Delta \mathcal{S}_{\mathcal{C}^a}$  and  $\Delta \mathcal{S}_{\mathcal{C}^b}$ . The area by area contribution is in line with the

changes in the utilization of the modified import/export capabilities. We plot the changes of the import areas  $\mathcal{A}^1$  and  $\mathcal{A}^2$ , and the export area  $\mathcal{A}^5$ , contribution to the social welfare in Fig. 8 (9) correspond-ing to shifting the security criterion from  $\mathcal{C}$  to  $\mathcal{C}^a$  ( $\mathcal{C}^b$ ).

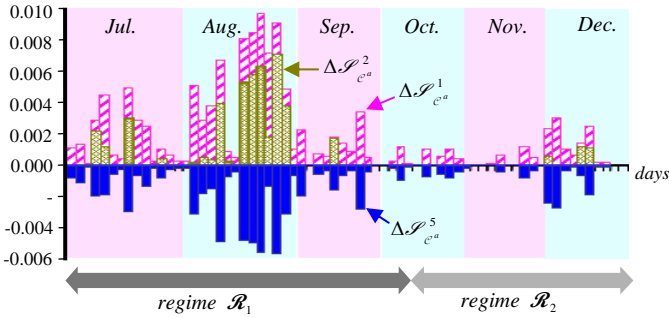


Fig. 8 Change in each area's contributions to social welfare under  $\mathcal{C}^a$

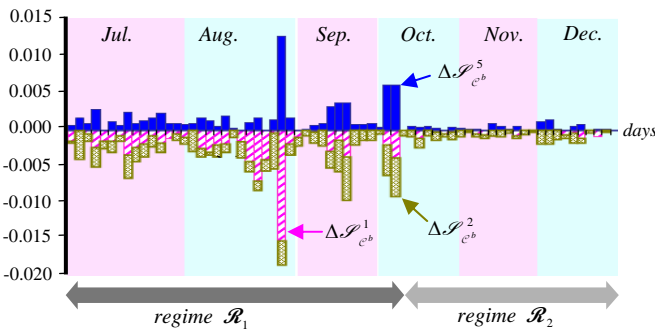


Fig. 9 Change in each area's contributions to social welfare under  $\mathcal{C}^b$

The price-responsive demand that characterizes regime  $\mathcal{R}_2$  plays an important role in the nature of the results. In general, as the willingness to pay of the buyers increases, the absolute value of the relative social welfare metric increases, attaining its highest value for fixed demand for each security criterion considered. Therefore, the impacts of the change in security criterion to either  $\mathcal{C}^a$  or  $\mathcal{C}^b$  on the social welfare are more pronounced for the fixed demand regime  $\mathcal{R}_1$  than the price responsive regime  $\mathcal{R}_2$ , as we observe in the plots of Figs. 6 – 9. Also, for a price-responsive demand with a uniformly low willingness to pay, the impacts may be small, and in certain cases may be negligibly so. The relaxation of the security criterion from  $\mathcal{C}$  to  $\mathcal{C}^a$  by not taking into account the double element contingencies, results in an insignificantly small relative social welfare metric values under the regime  $\mathcal{R}_2$ . The tightening of the security criterion from  $\mathcal{C}$  to  $\mathcal{C}^b$  using preventive actions to replace corrective ones reduces the social welfare. In fact, by utilizing the corrective control capabilities of the resources in the presence of price-responsive demand, the ISO-NE is able to decrease the economic impacts of the double tie line contingencies. Note that the extent of such an ability depends on various factors including the topology of the system, the characteristics of the generating units and the bids/offers of the market participants.

These findings of the comparative assessment lead us to conclude that the reference criterion  $\mathcal{C}$  is, for all intents and purposes, more appropriate for the ISO-NE DAM than either of the two security criteria considered. Through this study, we

also gain important insights on the role of price-responsive demand and the selected security control action. In fact, a key finding of the ISO-NE study is that the economic efficiency of the electricity markets need not decrease when a power system is operated under a stricter criterion as long as there is price-responsive demand. The proposed approach provides good insights into the ramification of changing the security criterion on both qualitative and quantitative basis.

## V. CONCLUDING REMARKS

In this paper, we propose an approach for the assessment of market performance under a specified security criterion and quantification of the market performance impacts due to a change in the criterion. The proposed approach provides, for the first time, a useful tool to the RTO to analyze the interdependence between market performance and the system security. The ability to quantify the monetary impacts of complying with a specified security criterion makes the approach useful in regulatory studies, longer-term planning activities and short-term activities related to the market and system operations. In fact, the tool enables the RTO to make better informed decisions. The proposed approach has a wide range of applications. These include the studies for the justification by the RTO to modify its decision for the selected security criterion and for and the cost/benefit analysis of network improvements to mitigate the market performance impacts of a set of specified contingencies. We illustrate the application of the proposed approach on the ISO-NE DAM to analyze whether the economic efficiency of the ISO-NE DAM is adversely impacted with the current security criterion in force. Our investigation provides important insights into the role of price-responsive demand and that of the security control actions. In fact, a key finding of this study is that the economic efficiency of the electricity markets need not decrease when a power system is operated under a stricter criterion as long as there is effective price-responsive demand and appropriate control actions are deployed

As the real-time energy markets, or RTM, become more prominent, the comparative assessments of a security criterion change have to be broadened to include the impacts on RTM. To be able to accomplish this broadened scope, the incorporation of a multi-settlement system [20], [21], involving the DAM and the RTM is required. In addition, the growing impacts of bilateral transactions also need to be explicitly considered in the quantification of security criterion change impacts. The studies extending the proposed approach to incorporate the multi-settlement system and the bilateral transactions will be reported in a future work.

## REFERENCES

- [1] FERC, "Remedying undue discrimination through open access transmission service and standard electricity market design," Docket No: RM01-12-000, Jan. 2003.
- [2] The Electric Energy Market Competition Task Force, "Report to Congress on competition in the wholesale and retail markets for electric energy," Docket No: AD05-17-000, May 2006.
- [3] NERC, Reliability Standards. [Online]. Available: [http://www.nerc.com/~filez/standards/Reliability\\_Standards.html](http://www.nerc.com/~filez/standards/Reliability_Standards.html).

- [4] T. E. D. Liacco., "The adaptive reliability control system," *IEEE Trans. Power App. and Sys.*, vol. PAS-86, pp. 517-531, May 1967.
- [5] R. Green and D. M. Newbery, "Competition in the British electric spot market," *Journal of Political Economy*, vol. 100, pp. 929-953, 1992.
- [6] C. D. Wolfram, "Strategic bidding in a multi-unit auction: an empirical analysis of bids to supply electricity in England and Wales," *Rand J. of Economics*, vol. 29, pp. 703-725, 1998.
- [7] E. T. Mansur, "Pricing behavior in the initial summer of the restructured PJM wholesale electricity market," University of California Energy Institute, PWP-083 April 2001.
- [8] S. Borenstein, J. B. Bushnell, and F. A. Wolak, "Measuring Market Inefficiencies in California's Restructured Wholesale Electricity Market," *The American Economic Review*, vol. 92, pp. 1376-1405, Dec. 2002.
- [9] S. D. I. Torre, A. J. Conejo, and J. Contreras, "Simulating oligopolistic poolbased electricity markets: a multi-period approach," *IEEE Trans. Power Syst.*, vol. 18, pp. 1547-1555, 2003.
- [10] R. Baldick, R. Grant, and E. Kahn, "Theory and application of linear supply function equilibrium in electricity markets," *Journal of Regulatory Economics*, vol. 25, pp. 143-167, 2004.
- [11] R. J. Kaye, F. F. Wu, and P. Varaiya, "Pricing for system security," *IEEE Trans. Power Syst.*, vol. 10, pp. 575-583, May 1995.
- [12] T. Wu, M. Rothleder, Z. Alaywan, and A. D. Papalexopoulos, "Pricing energy and ancillary services in integrated market systems by an optimal power flow," *IEEE Trans. Power Syst.*, vol. 19, pp. 339-347, Feb. 2004
- [13] J. M. Arroyo and F. D. Galiana, "Energy and reserve pricing in security and network-constrained electricity markets," *IEEE Trans. Power Syst.*, vol. 20, pp. 634-643, May 2005.
- [14] F. Alvarado, Y. Hu, D. Ray, R. Stevenson, and E. Cashman, "Engineering Foundations for the Determination of Security Costs," *IEEE Trans. Power Syst.*, vol. 6, pp. 1175-1182, Aug 1991.
- [15] D. S. Kirschen, K. R. W. Bell, D. P. Nedic, D. Jayaweera, and R. N. Allan, "Computing the value of security," *IEE Pro. Generation Transmission and Distribution*, vol. 150, pp. 673-678, Nov 2003.
- [16] S. Burns and G. Gross, "Value of service reliability," *IEEE Trans. Power Syst.*, vol. 5, pp. 825-834, May 1990.
- [17] P. Nitu and G. Gross, "Evaluation of reliability in power system operational planning," in *Proc. Power Sys. Comp. Conf.*, pp. 355-362, 1993.
- [18] M. Liu and G. Gross, "Generalized transmission scheduling problem: scheduling of nondiscriminatory transmission services in the mixed pool-bilateral systems," in *Proc. of PowerTech 2005* St. Petersburg, Russia, 2005.
- [19] ISO-NE, Operating Reserves White Paper. [Online]. Available: [http://www.iso-ne.com/pubs/whtpprs/operating\\_reserves\\_white\\_paper.pdf](http://www.iso-ne.com/pubs/whtpprs/operating_reserves_white_paper.pdf), 2006.
- [20] ISO-NE, The Multi-Settlement System. [Online]. Available: [http://www.iso-ne.com/nwsiss/grid\\_mkts/how\\_mkts\\_wrk/multi\\_settle/index.html](http://www.iso-ne.com/nwsiss/grid_mkts/how_mkts_wrk/multi_settle/index.html).
- [21] R. Kamat and S. S. Oren, "Two-settlement systems for electricity markets under network uncertainty and market power," *Journal of Regulatory Economics*, vol. 25, pp. 5-37, Jan 2004.
- [22] T. Guler, G. Gross, E. Litvinov and R. Coutu "Quantification of Market Performance as a Function of System Security," *IEEE Trans. Power Syst.*, vol. 22, pp. 1602-1611, Nov. 2007.



**George Gross** (F' 88) is Professor of Electrical and Computer Engineering and Professor, Institute of Government and Public Affairs, at the University of Illinois at Urbana-Champaign. His current research and teaching activities are in the areas of power system analysis, planning, economics and operations and utility regulatory policy and industry restructuring. In the 1999-2000 academic year, he was invited to be a Visiting Professor at a number of Italian institutions including University of Pavia, Politecnico di Milano and Politecnico di Torino. His undergraduate work was completed at McGill University, and he earned his graduate degrees from the University of California, Berkeley. He was previously employed by Pacific Gas and Electric Company in various technical, policy and management positions. Dr. Gross won the Franz Edelman Management Science Achievement Award in 1985 and several prize paper awards. He has consulted widely to organizations in North and South America, Europe and Asia.



**Teoman Güler** (S' 06) received the B.S. degree in Electrical Engineering from Bogazici University, Istanbul, Turkey in 1999, M.S. degree in Electrical Power Engineering from Rensselaer Polytechnic Institute, Troy, New York, in 2001 and PhD in Electrical Engineering from University of Illinois at Urbana Champaign in 2009. He is currently an Energy Trader at PSEG Energy Resources and Trade LLC. He is leading a number of traders on the speculative trading and hedging activities of PSEG with a strong emphasis on system congestion based market products. In 2007-2008, he was employed by Citadel Investment Group as a quantitative research analyst. His research interests include power system operations, control, optimization, and economics.